



Assembly Instructions

Urban Rustic Dressing Table and Mirror



Important before assembly:

Read these instructions carefully before assembling or using the product.

Please check the contents of the boxes before attempting to assemble this product. The instructions will have a checklist of parts and fittings.

It would be sensible to lay a rug or a carpet on the floor where you intend to assemble the product, to avoid scratches and damaging the product or the floor.

Assemble the product as close to its intended final location/room as possible.

Do NOT use any power tools as this may damage the frame.

Health & Safety:

This product or some parts of this product will be heavy. Please use an assistant when lifting.

Please keep small parts out of reach of children.

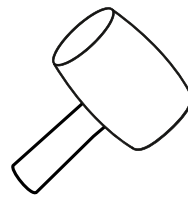
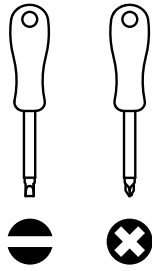
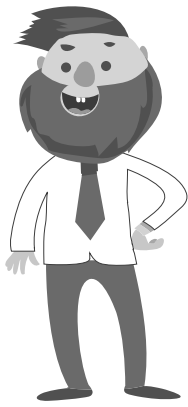
Always use on a level, even surface.

DO NOT jump on the product or any of its parts.

DO NOT use this product if any parts are missing, damaged or worn.

DO NOT use this product unless all fixings are secured.

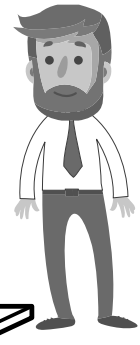
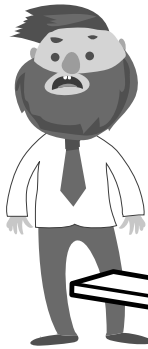
Please keep these instructions for future reference.



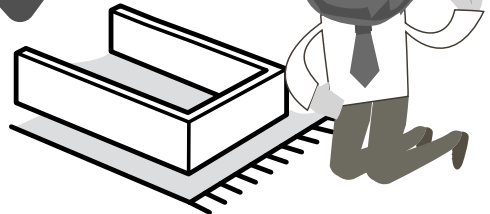
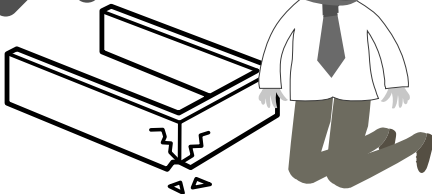
(Not metal)

These tools are not necessary, but may help to assemble certain parts of the product.

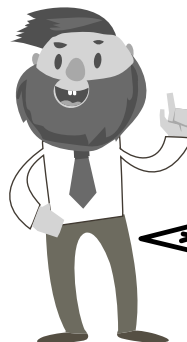
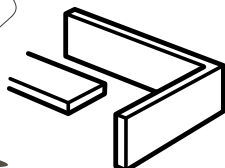
Do NOT use any power tools as this may damage the frame.



This product or some parts of this product will be heavy. Please use an assistant when lifting.

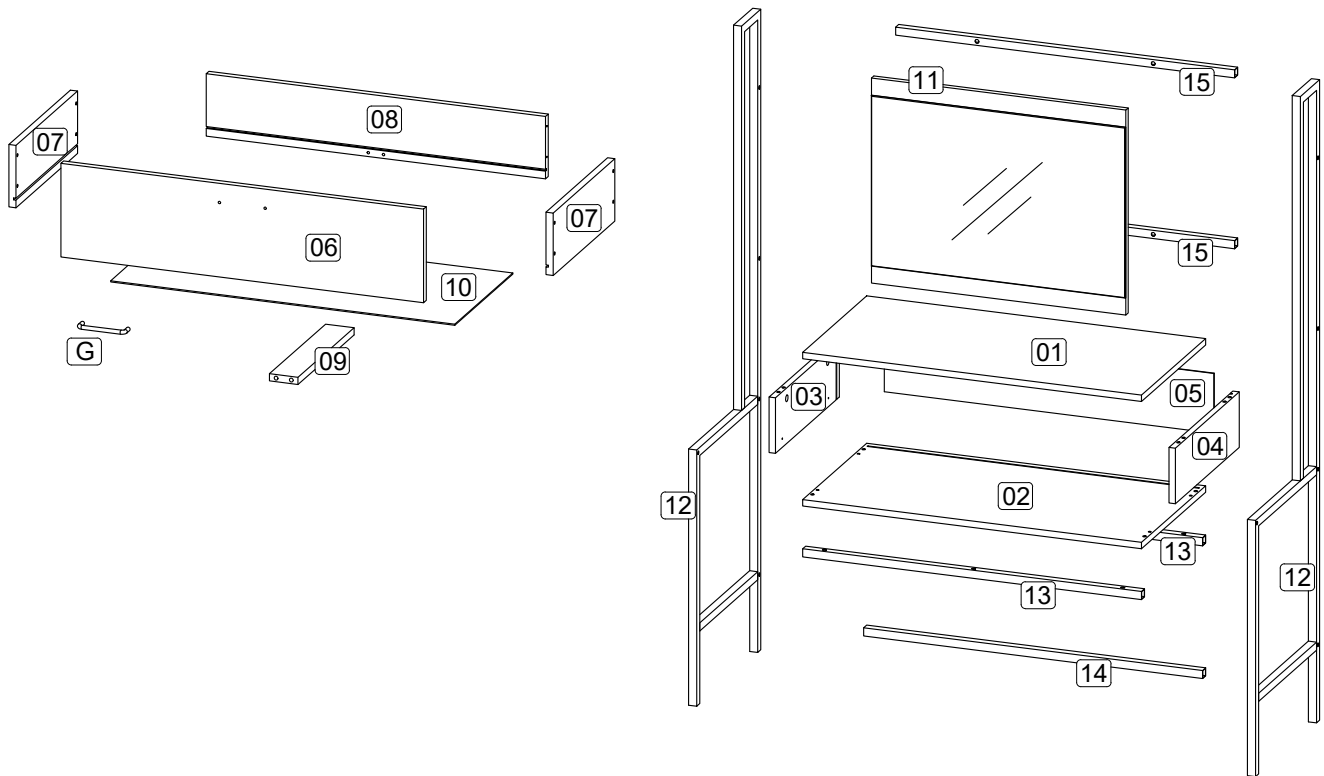


Never drag or push the pieces across a hard or stone floor as this will cause damage to the joints. Use a carpet or a rug for extra care.



If you have problems assembling or have damaged or missing pieces, please contact us by visiting:

<https://www.happybeds.co.uk/customer-service>



Parts List			Hardware List		
Part	Description	Qty	Part	Description	Qty
01	Top panel	1	A1	Cam lock	8
02	Bottom panel	1	A2	Minifix screw	8
03	Side panel (Left)	1	A3	Plastic cap	8
04	Side panel (Right)	1	B	M8 x 30mm Wood Dowel	8
05	Back panel	1	C	M6 x 50mm CSK Cap Wood screw	4
06	Drawer front	1	D	M3.5 x 16mm C.B Screw	14
07	Drawer side	2	E	M4 x 38mm C.B Screw	8
08	Drawer back	1	F	Allen key M4	1
09	Drawer bone	1	G	Handle 100.96. BLM	1
10	Drawer bottom	1	H	Handle screw M4 x 35mm	2
11	Hanger plate (mirror)	1	I	JCBC screw M6 x 30mm	10
12	Metal Side (Left & Right)	2	J	JCBC screw M6 x 40mm	10
13	Metal middle support	2	K1	14" Drawer slide (Left / Right)	2
14	Metal bottom support	1	K2	14" Drawer slide (Left / Right)	2
15	Metal mirror support	2	L	8" x 1" PP tape	2
			M	Wall plug	-

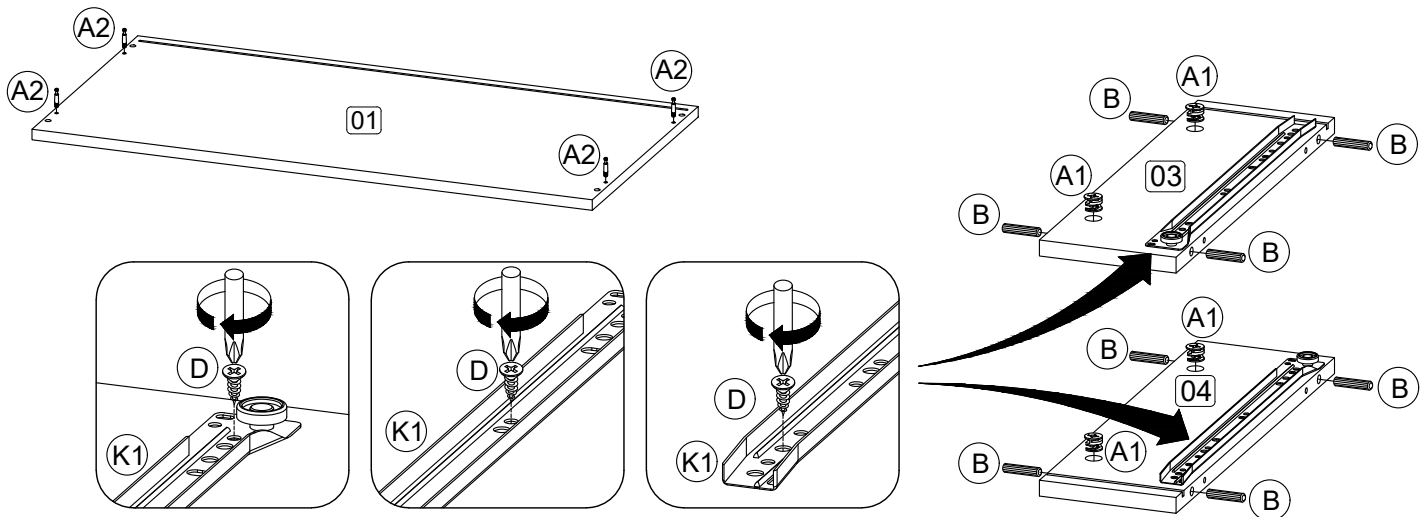
**** You will need a small mallet and a screwdriver for assembly.**

**** Some screws and wooden dowel may remain.**

**** Note : To secure the item to the wall, hardware E (2 pcs) and M (2 pcs) are not provided.**

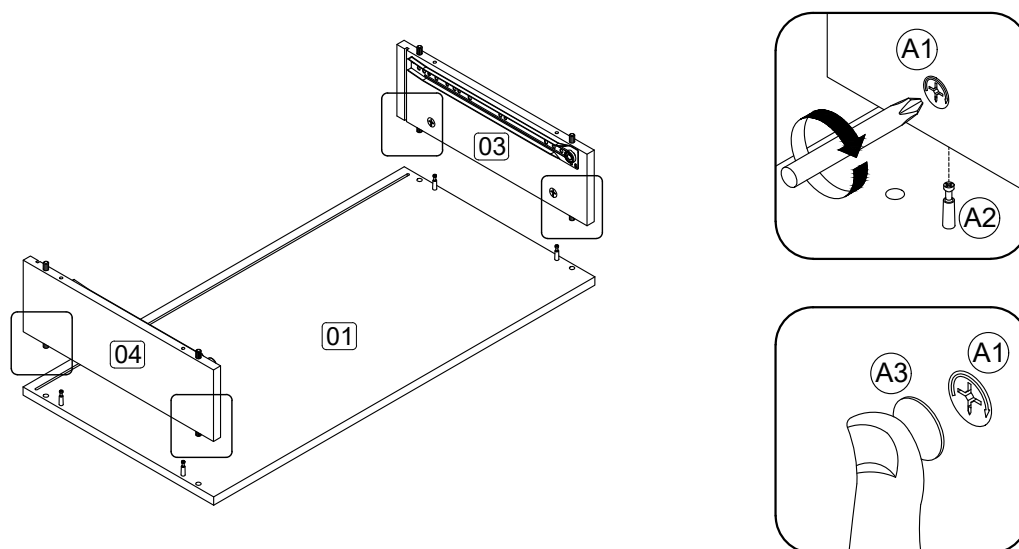
Step 1: Prepare these parts for assembly using hardware parts A1, A2, B, D and K1.

DO NOT use any power tools as this may damage the frame and will invalidate any claim.



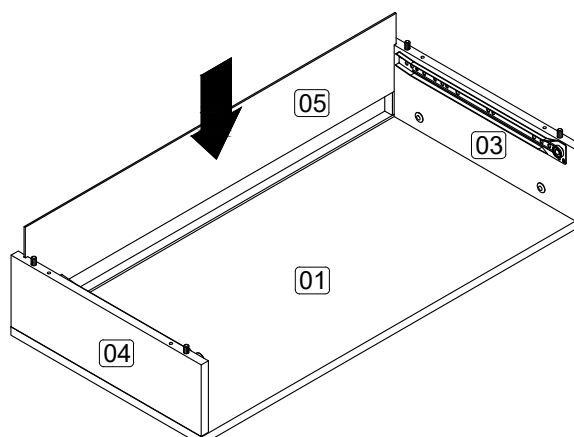
Step 2: Attach the panel (3) and (4) to panel (1) using hardware A1 and A3 with a screwdriver (not provided).

DO NOT use any power tools as this may damage the frame and will invalidate any claim.



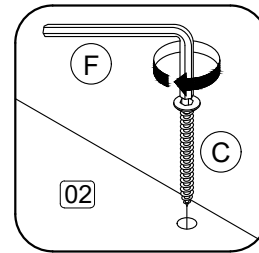
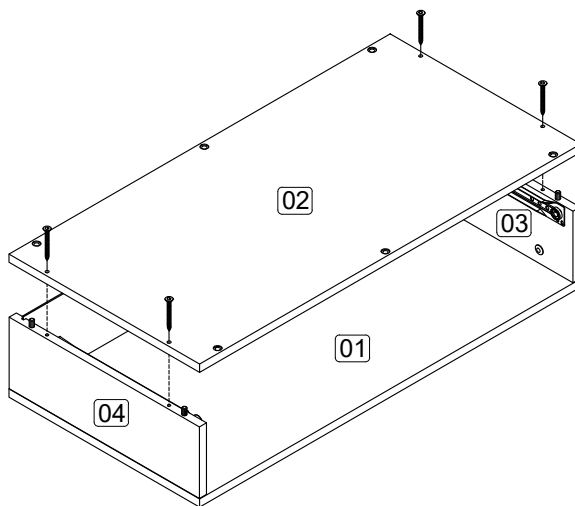
Step 3: Insert the panel (5) along the slot.

DO NOT use any power tools as this may damage the frame and will invalidate any claim.



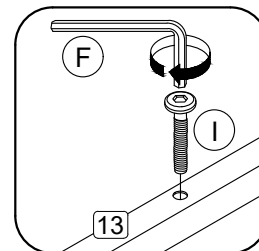
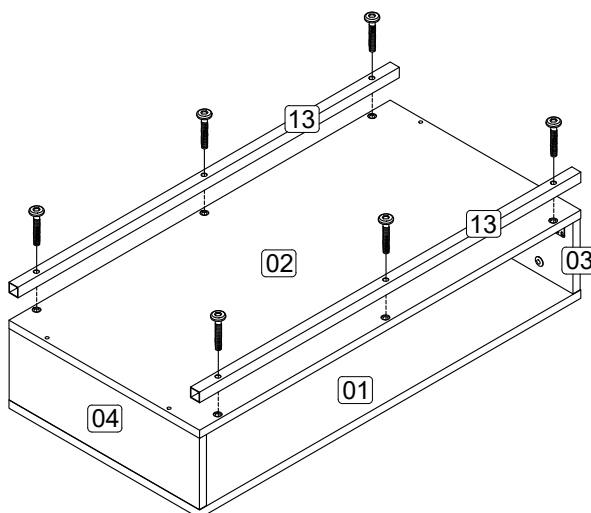
Step 4: Attach the panel (2) to panel (3) and (4) using hardware C and F.

DO NOT use any power tools as this may damage the frame and will invalidate any claim.



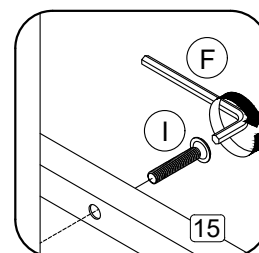
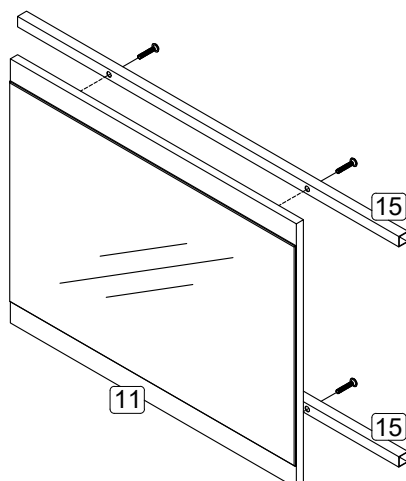
Step 5: Attach the Metal Middle Support (13) to panel (2) using hardware I and F.

DO NOT use any power tools as this may damage the frame and will invalidate any claim.

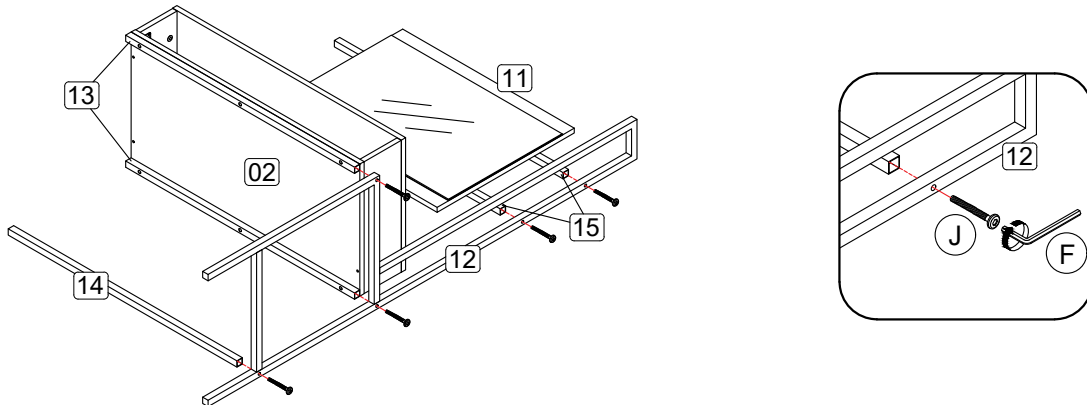


Step 6: Attach the Metal Mirror Support (15) to panel (11) using hardware I and F.

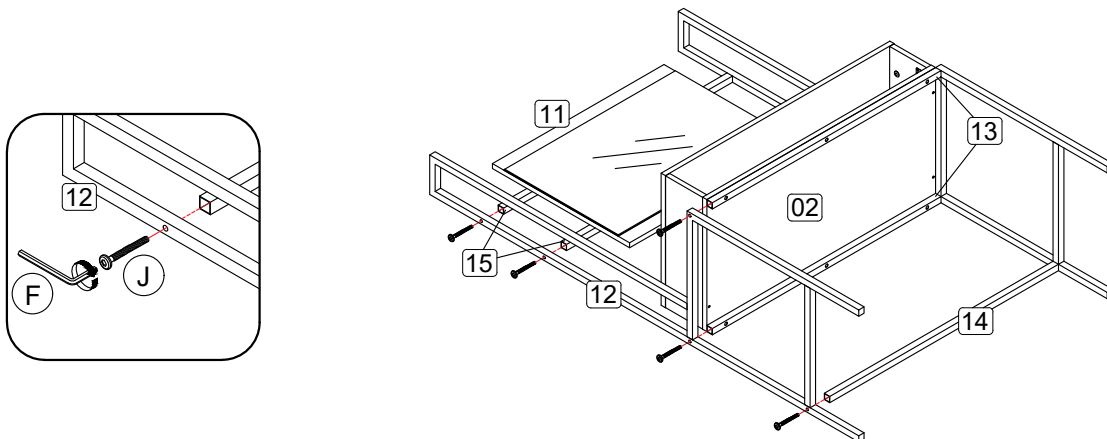
DO NOT use any power tools as this may damage the frame and will invalidate any claim.



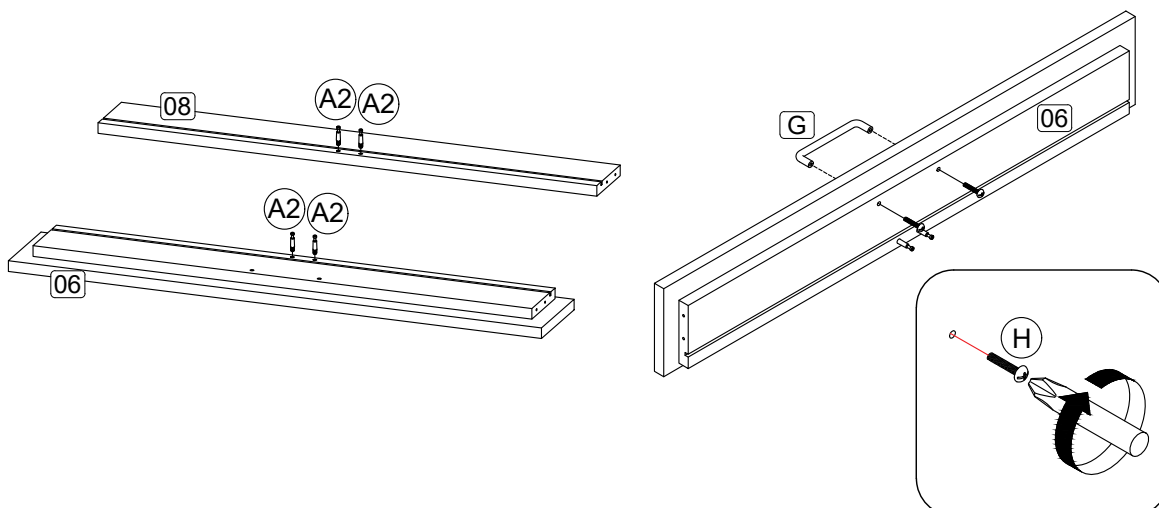
Step 7: Attach the Metal Side (12) to Metal Middle Support (13), Metal Bottom Support (14) and Metal Mirror Support (15) using hardware I and F.
DO NOT use any power tools as this may damage the frame and will invalidate any claim.



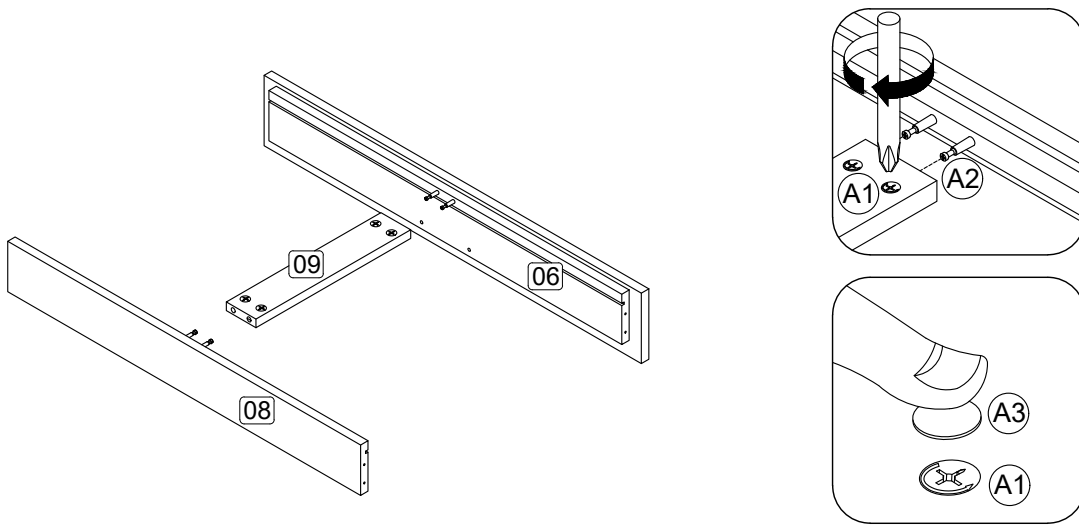
Step 8: Attach the Metal Side (12) to Metal Middle Support (13), Metal Bottom Support (14) and Metal Mirror Support (15) using hardware I and F.
DO NOT use any power tools as this may damage the frame and will invalidate any claim.



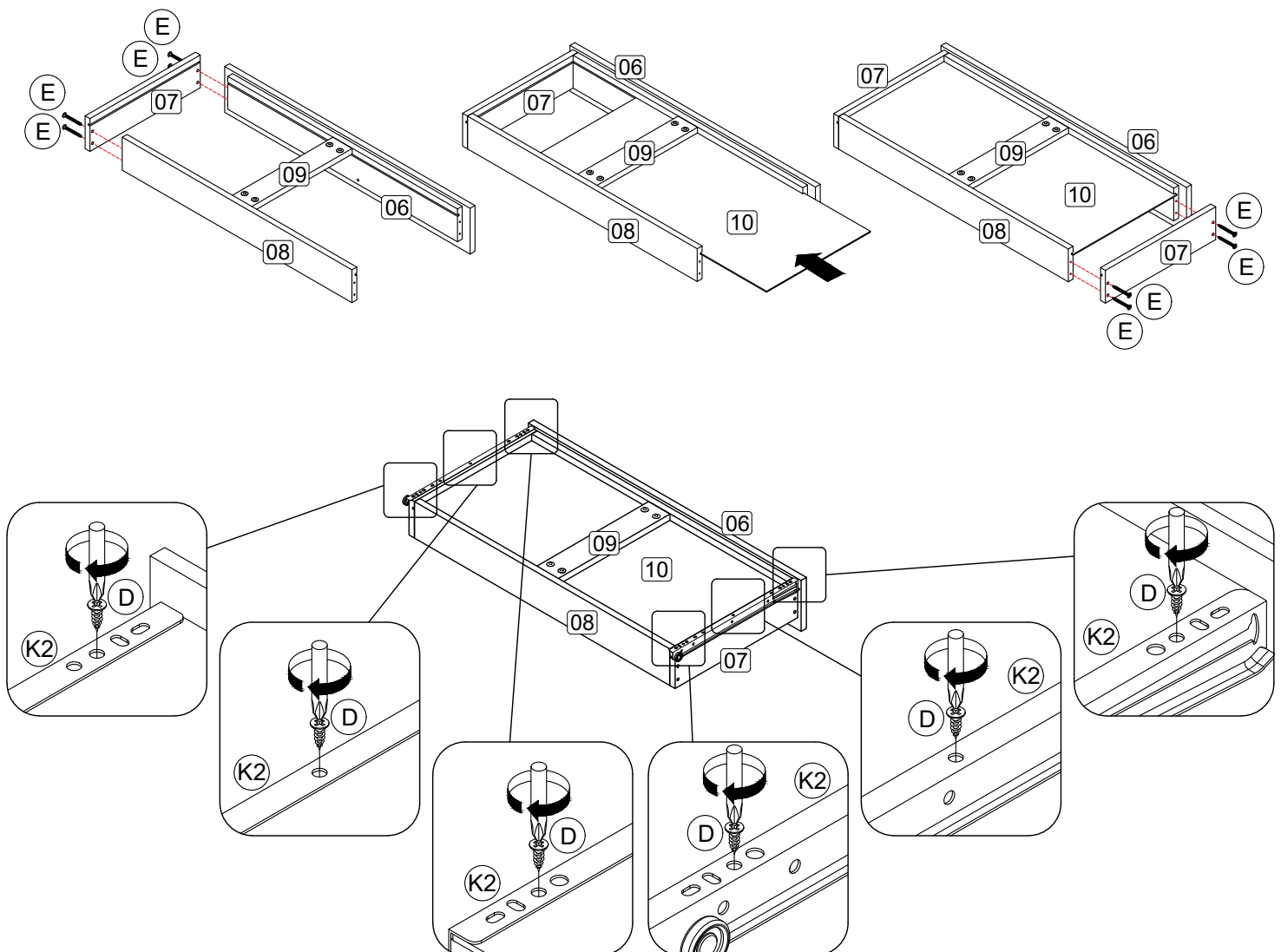
Step 9: Fix hardware G onto panel (6) using hardware H with a screwdriver (not provided).
 Insert hardware A2 onto panel (6) and (8) with a screwdriver (not provided).
DO NOT use any power tools as this may damage the frame and will invalidate any claim.



Step 10: Attach the panel (9) to panel (6) and (8) using hardware A1 and A3 with a screwdriver (not provided).
DO NOT use any power tools as this may damage the frame and will invalidate any claim.

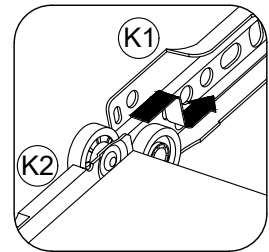
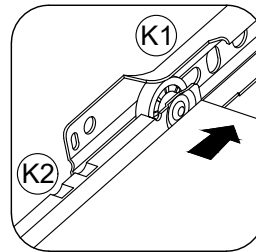
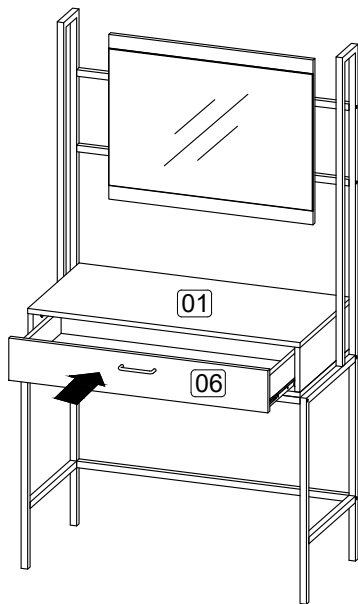


Step 11: Assemble the drawer components using hardware D, E and K2.
DO NOT use any power tools as this may damage the frame and will invalidate any claim.



Step 12: Assemble the drawers in place along the drawer slides.

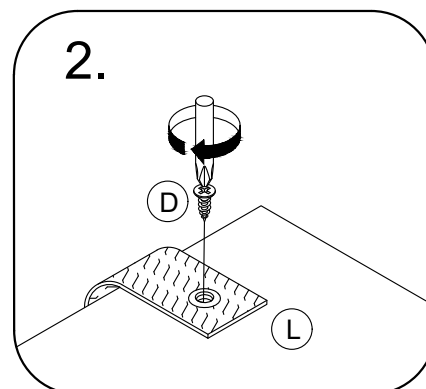
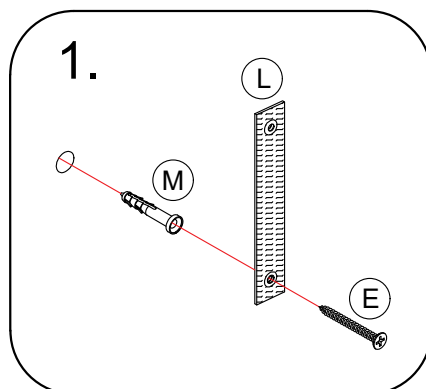
DO NOT use any power tools as this may damage the frame and will invalidate any claim.



Step 13: To secure the item to the wall use hardware E, L and M using a screwdriver (not provided).

Then attach hardware part L to the panel (2) using hardware D with a screwdriver (not provided).

DO NOT use any power tools as this may damage the frame and will invalidate any claim.



PLEASE NOTE that wall fixings are not supplied as different wall materials require different fixing devices. You must use fixings devices suitable for the type of wall you intend to mount product to. Ensure the head of any screw used has a diameter greater than the mounting hole and the fixing is safe and secure before use.

Birlea Furniture advise you use the wall straps provided to further enhance the safety of this product.

Additional Information:

- For complete product information, images and dimension diagrams please visit the website www.birlea.com
- If you have any issues with your item please contact the retailer directly you purchased it from who will be able to resolve any issues with Birlea.
- Why don't you send us photos of your assembled furniture to info@birlea.com to be shared in our #birleahome feature on instagram.

Please dispose of all packaging safely.

General Care & Maintenance

Wipe clean with a slightly damp cloth.
Avoid the use of all household cleaners and abrasives.

Periodically check all screw & fixings to ensure they are secure.
When moving your product, carefully lift into place. Never drag or push the pieces across the floor as this will cause damage to the joints and could result in failure to the product that will invalidate the warranty.

For more information on cleaning and product care visit:
<https://www.happybeds.co.uk/help-and-advice>

Notes

We've tried to make this product as easy to assemble as possible. In the unlikely event that you have problems putting it together or have damaged or missing pieces, please contact us by visiting:

<https://www.happybeds.co.uk/customer-service>



www.happybeds.co.uk

